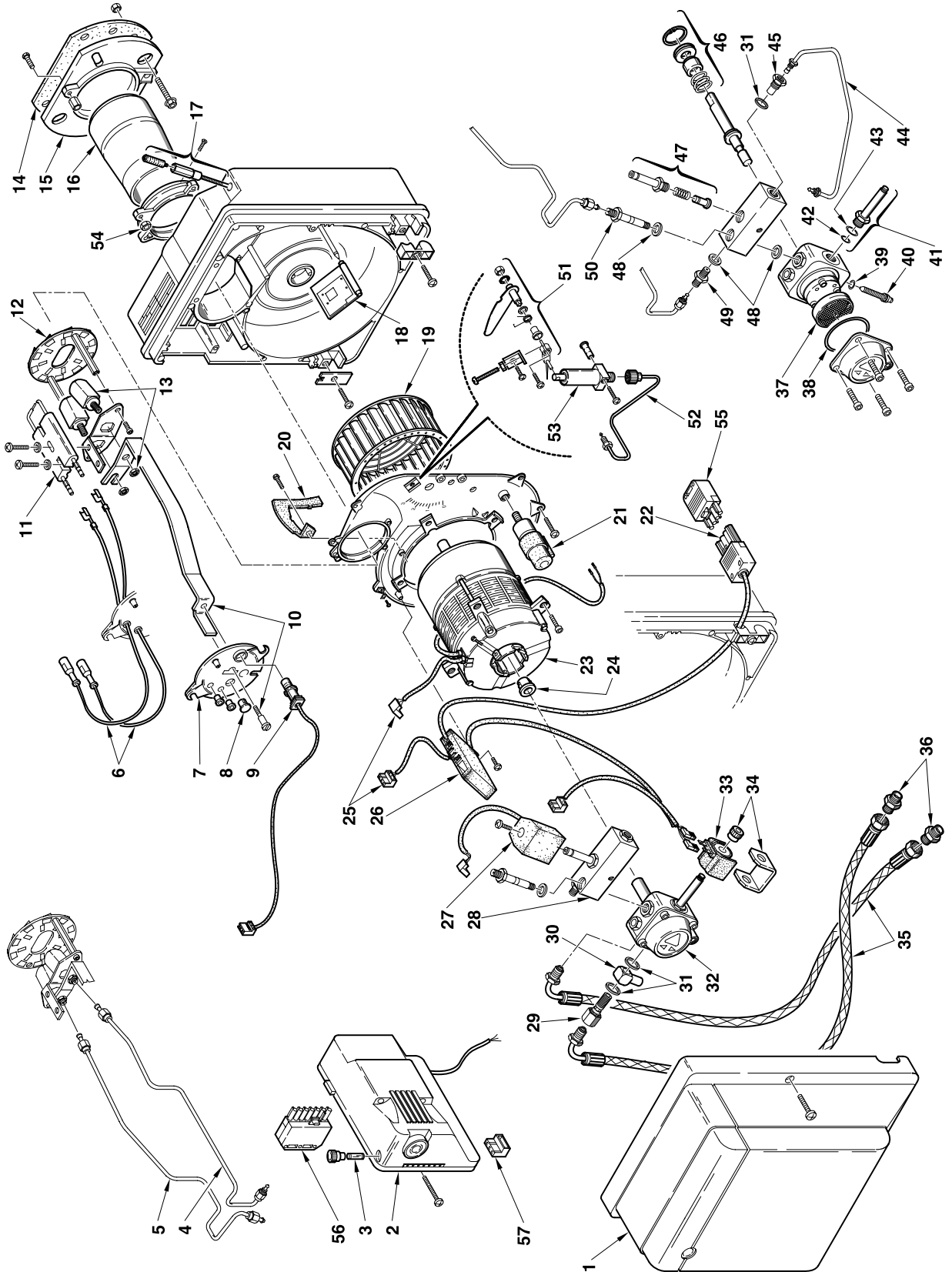


Bruciatori di gasolio • Light oil burners • Brûleurs fioul • Öl-Gebläsebrenner
Quemadores de gasóleo

Gulliver RG5D

COD. **3739820 - 3739850**

TIPO / TYPE / TYP **398 T1**



N.	COD.	3739820	3739850	DESCRIZIONE	DESCRIPTION	DESCRIPTION	BESCHREIBUNG	DENOMINACIÓN
1	3008558	●	●	COFANO	COVER	CAPOT	BRENNERHAUBE	ENVOLVENTE
2	3001174	●	●	APPARECCHIATURA 552SE	CONTROL BOX 552SE	BOITE DE CONTROLE 552SE	STEUERGERÄT 552SE	CAJA DE CONTROL 552SE
2	3008883	●	●	APPARECCHIATURA 553SE/H	CONTROL BOX 553SE/H	BOITE DE CONTROLE 553SE/H	STEUERGERÄT 553SE/H	CAJA DE CONTROL 553SE/H
3	3007396	●	●	FUSIBILE	FUSE	FUSIBLE	FEINSICHERUNG	FUSIBLE
4	3008564	●	●	TUBO	TUBE	TUYAU	DRUCKROHR	TUBO
5	3008563	●	●	TUBO	TUBE	TUYAU	DRUCKROHR	TUBO
6	3007465	●	●	COLLEGAMENTO A.T.	HIGH VOLTAGE LEAD	CABLE HAUTE TENSION	KABEL ZÜNDELEKTRODEN	CABLES ELECTRODOS
7	3008562	●	●	COPERCHIO	COVER	COUVERCLE	DÜSENSTOCK-FLANSCH	TAPA
8	3007458	●	●	VETRINO	VIEWING PORT	REGARD	VERSCHLUßSTOPFEN	MIRILLA
9	3007839	●	●	FOTORESISTENZA	P.E. CELL	CELLULE PHOTORESISTANCE	FOTOWIDERSTAND	FOTORESISTENCIA
10	3008561	●	●	STAFFA E VITE	BRACKET AND SCREW	SUPPORT ET VIS	DÜSENSTOCKHALTERUNG	SOPORTE ARRASTRE Y TORNILLO
11	3007495	●	●	GRUPPO ELETTRODI	ELECTRODE ASSEMBLY	GROUPE ELECTRODES	ELEKTRODENBLOCK	CONJUNTO ELECTRODOS
12	3008559	●	●	ELICA	DIFFUSER DISC	ACCROCHE FLAMME	STAUSCHEIBE	DISCO ESTABILIZADOR
13	3008560	●	●	PORTAUGELLO	NOZZLE HOLDER	PORTE GICLEUR	DÜSENSTOCK	PORTABOQUILLA
14	3005813	●	●	SCHERMO	GASKET	JOINT ISOLANT	KESSELFLANSCH-DICHTUNG	JUNTA AISLANTE
15	3005814	●	●	FLANGIA	FLANGE	BRIDE	KESSELFLANSCH	BRIDA
16	3008565	●	●	TUBO FIAMMA	FLAME TUBE	GUEULARD	FLAMMROHR	TUBO LLAMA
17	3007648	●	●	REG. SERRANDA 2° STADIO	2 nd STAGE AIR DAMPER REG.	REG. VOLET D'AIR 2 ^{ème} ALLURE	2. ST. LUFTKLAPPENREGLER	CONJUNTO REGUL. REG. 2° ETAPA
18	3008497	●	●	SERRANDA ARIA	AIR DAMPER	VOLET D'AIR	LUFTKLAPPE	REGISTRO DEL AIRE
19	3008494	●	●	GIRANTE	FAN	TURBINE	GEBLÄSERAD	TURBINA
20	3008552	●	●	CONVOGLIATORE	SUCTION DUCT	CONVOYEUR D'AIR	LUFTLEITBLECH	GUÍA
21	3008499	●	●	CONDENSATORE 8 µF	CAPACITOR 8 µF	CONDENSATEUR 8 µF	KONDENSATOR 8 µF	CONDENSADOR 8 µF
22	3006949	●	●	PRESA A 4 POLI	4 POLE SOCKET	PRISE 4 POLES	4 - POLIGE STECKDOSE	CONECTOR HEMBRA DE 4 CONTAC
23	3008506	●	●	MOTORE	MOTOR	MOTEUR	MOTOR	MOTOR
24	3000443	●	●	GIUNTO	JOINT	ACCOUPLLEMENT	PUMPENKUPPLUNG	ACOPLAMIENTO
25	3007454	●	●	PRESA	MOTOR SOCKET	PRISE MOTEUR	STECKDOSE FÜR MOTOR	CONECTOR MOTOR
26	3008983	●	●	RITARDAT. ELETTRONICO	ELEC.START DELAYNG DEV.	RETARDATEUR ELECTR.	ELEKTR. VERZÖGERER	RETARDADOR ELECTRÓNICO
27	3008575	●	●	BOBINA	COIL	BOBINE	MV SPULE	BOBINA
28	3008569	●	●	GRUPPO CORPO VALVOLA	VALVE BODY SYSTEM	GROUPE CORPS VANNE	VENTILKÖRPERSYSTEM	CONJUNTO CUERPO VÁLVULA
29	3005804	●	●	PERNO	PIN	BOULON CREUX	HOHLKERNSCHRAUBE	PERNO
30	3005805	●	●	RACCORDO	CONNECTOR	MAMELON	ANSCHLUßNIPPEL	RACORD
31	3007079	●	●	GUARNIZIONE	SEAL	JOINT	DICHTUNG	JUNTA
32	3008570	●	●	POMPA	PUMP	POMPE	ÖLPUMPE	BOMBA
33	3007565	●	●	BOBINA	COIL	BOBINE	MV SPULE	BOBINA
34	3007566	●	●	MANTELLO E POMELLO	SHELL AND KNOB	ETRIER ET ECROU	HALTEBÜGEL MIT SCHRAUBE	PROTECCIÓN BOBINA
35	3005720	●	●	TUBO FLESSIBILE	FLEXIBLE OIL LINE	FLEXIBLE	ÖLSCHLAUCH	TUBO FLEXIBLE
35	3006934	●	●	TUBO FLESSIBILE	FLEXIBLE OIL LINE	FLEXIBLE	ÖLSCHLAUCH	TUBO FLEXIBLE
36	3009046	●	●	RACCORDO	CONNECTOR	MAMELON	ANSCHLUßNIPPEL	RACORD
36	3009068	●	●	RACCORDO	CONNECTOR	MAMELON	ANSCHLUßNIPPEL	RACORD
37	3005719	●	●	FILTRO	FILTER	FILTRE	FILTREINSATZ ÖLPUMPE	FILTRO
38	3007162	●	●	ANELLO OR	O - RING	JOINT TORIQUE	O - RING DICHTUNG	JUNTA TÓRICA
39	3007028	●	●	ANELLO OR	O - RING	JOINT TORIQUE	O - RING DICHTUNG	JUNTA TÓRICA
40	3007202	●	●	REGOLATORE	REGULATOR	REGULATEUR PRESSION POMPE	DRUCKREGULIERSCHRAUBE	REGULADOR
41	3007582	●	●	VALVOLA	NEEDLE VALVE	VANNE MAGNETIQUE	MAGNETVENTIL-KÖRPER	VÁLVULA
42	3007156	●	●	ANELLO OR	O - RING	JOINT TORIQUE	O - RING DICHTUNG	JUNTA TÓRICA
43	3007173	●	●	ANELLO OR	O - RING	JOINT TORIQUE	O - RING DICHTUNG	JUNTA TÓRICA
44	3008574	●	●	TUBO	TUBE	TUYAU	DRUCKROHR	TUBO

